

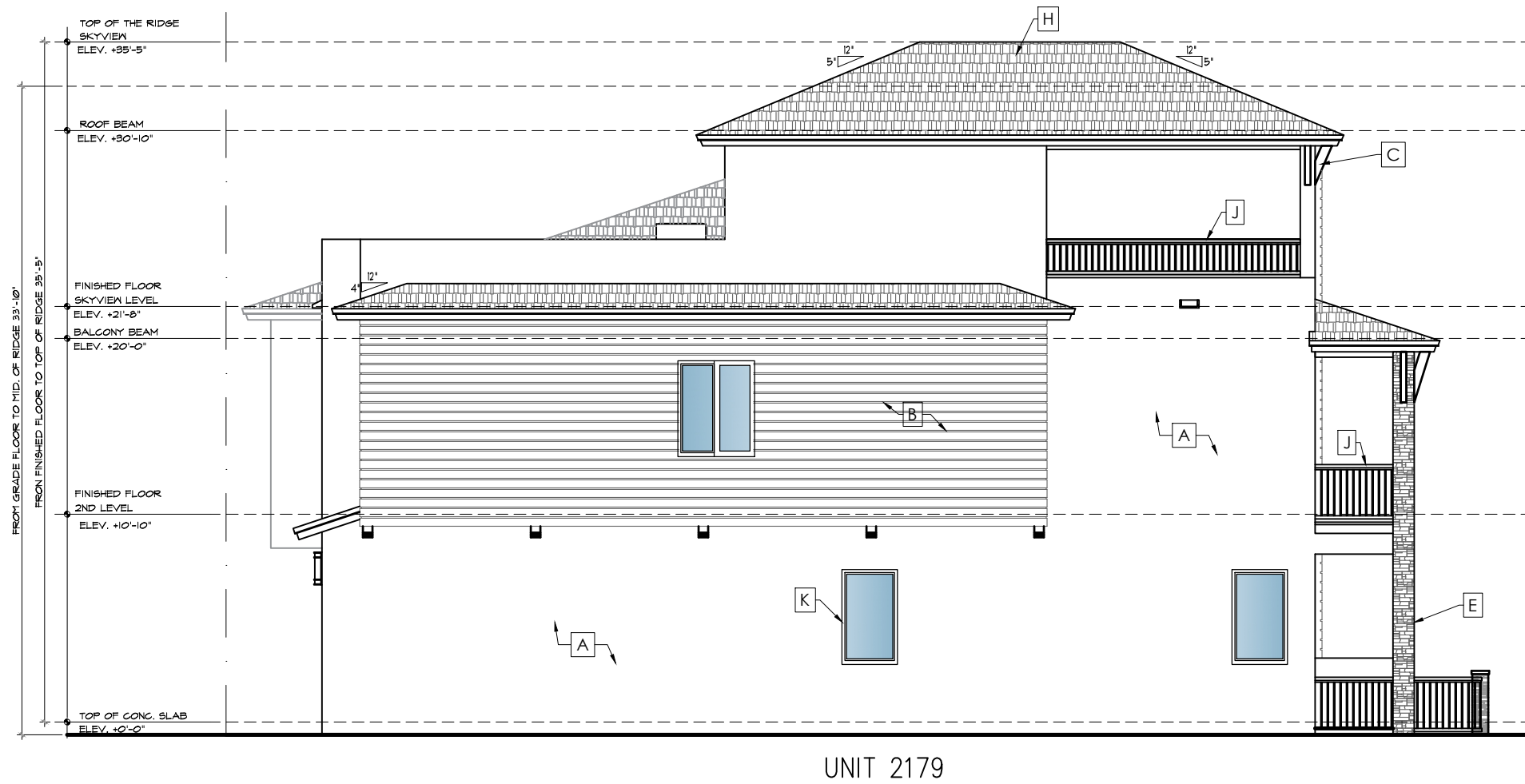
COPYRIGHT © 2020 PASCUAL, PEREZ, KILIDDJIAN & ASSOCIATES - ARCHITECTS - PLANNERS
The architectural design and detail drawings for the building and / or overall project are the legal property of and all rights are reserved by the Architect. Their use for reproduction, construction or distribution is prohibited unless authorized in writing by Architect.



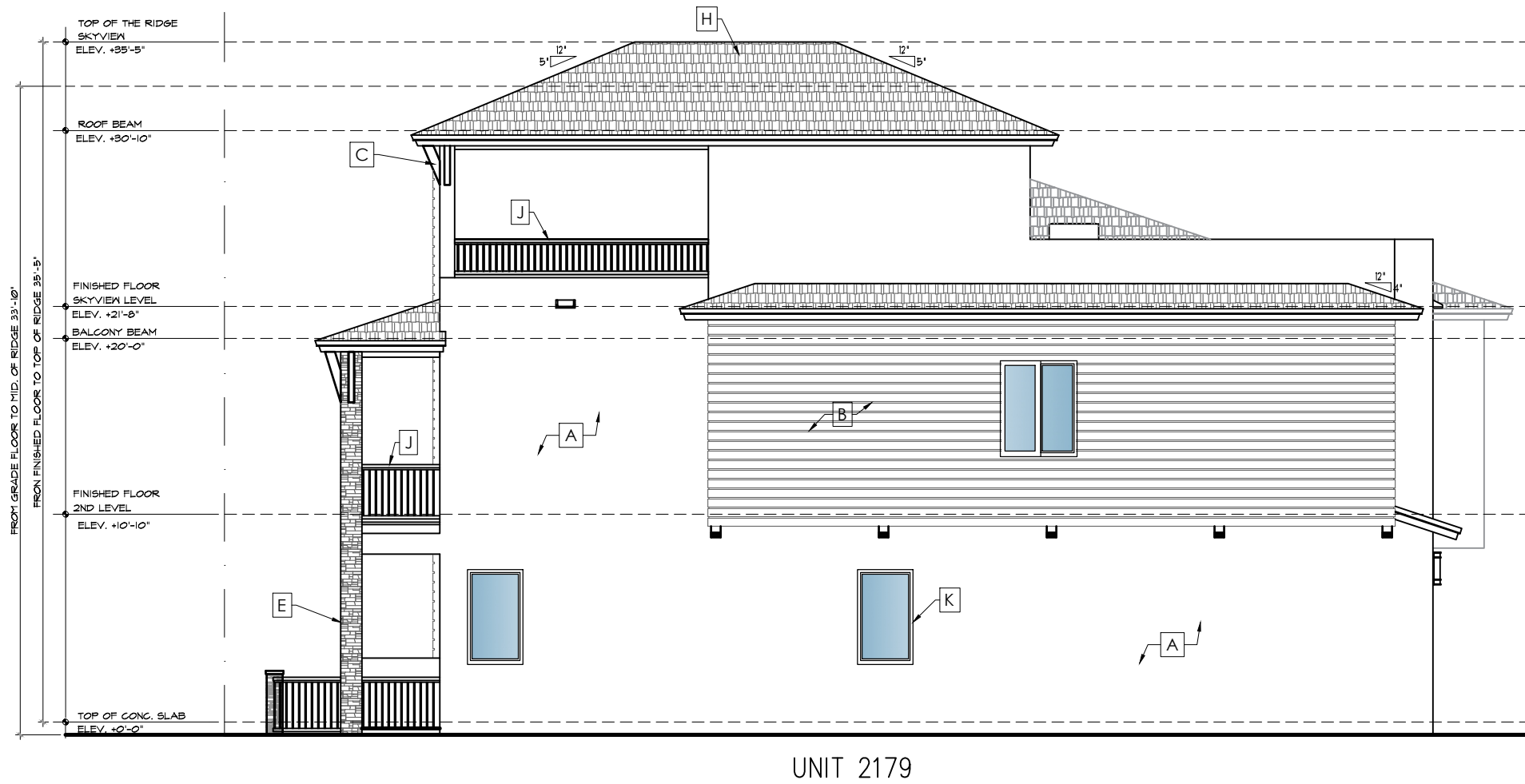
7 UNIT BUILDING LINEAR - FRONT ELEVATION
SCALE: 1/8" = 1'-0"



7 UNIT BUILDING LINEAR - REAR SIDE ELEVATION
SCALE: 1/8" = 1'-0"



7 UNIT BUILDING LINEAR - LEFT SIDE ELEVATION
SCALE: 1/8" = 1'-0"



7 UNIT BUILDING LINEAR - RIGHT SIDE ELEVATION
SCALE: 1/8" = 1'-0"

MATERIAL & FINISHES LEGEND

- A BODY - SMOOTH STUCCO FINISH ALABASTER SW 7008
- B STUCCO DESIGNS COLUMNS, TOP FLOOR EYEBROWS AND BALCONY CEILINGS, ACCESSIBLE BEIGE SW 7036
- C FASCIA AND BRACKETS, ROCKWOOD MEDIUM BROWN SW 2807
- D CAPS ON EXTERIOR STONE COLUMNS, SAME COLOR AS BODY
- E EXTERIOR STONE COLUMNS, NATURAL LEDGESTONE MYSTIC
- F GARAGE DOOR, BLACK BEAN SW 6006
- G ALUMINUM RAIN GUTTERS, ROYAL BROWN
- H ROOF TILES, BORAL SAXONY 900 SLATE-LAKE WALES-COLOR ESPRESSO BLEND
- I BALCONY FLOOR, COMEX NATURAL CONCRETE - PLAIN TEXTURE WITH NO BORDER
- J BALCONY ALUMINUM RAILS, BRONZE COLOR
- K WINDOW FRAMES, FRONT DOORS AND SLIDING DOORS, BRONZE COLOR
- L COACH LIGHTS SEAGULL CYLINDER STYLE, TWO LIGHT LANTERN BRONZE

	Scheme 1	Scheme 2	Scheme 3	Scheme 4	Scheme 5
Body					
Stucco Designs Columns, Top Floor Eyebrows and Balcony Ceilings					
Fascia and Brackets					
Caps on Exterior Stone Columns					
Exterior Stone Columns					

PASCUAL PEREZ KILIDDJIAN STARR

ARCHITECTS - PLANNERS
LICENSE # AA 26001357

EDGARDO PEREZ , AIA
LICENSE No. : AR 0015394
MARIO P. PASCUAL , AIA
LICENSE No. : AR 0008254
PETER KILIDDJIAN, AIA
LICENSE No. : AR 0093067
ANDREW J. STARR, RA
LICENSE No. : AR 0095130

AT THE BEACON CENTER
1330 NW 84th AVENUE
DORAL, FLORIDA 33126
PH : (305) 592-1363
FAX: (305) 592-6865
<http://www.ppkarch.com>

COPYRIGHTING PASCUAL, PEREZ, KILIDDJIAN & ASSOCIATES - ARCHITECTS - PLANNERS
The architectural design and detail drawings of this building and/or overall project are the legal property of, and all rights are reserved by the Architect. Their use for reproduction, construction or distribution is prohibited unless authorized in writing by the Architect.

REVISIONS:

OWNER:
LENNAR HOMES

POMPANO LIVE!
BY: LENNAR HOMES
POMPANO BEACH, FLORIDA

SEAL:

TOWNHOUSE

7 UNITS BUILDING LINEAR
ELEVATION

DATE : 2024-08-23
SCALE : AS SHOWN
DRAWN : CG/JC
CHECK BY : PPKS
JOB NO. :

A-2.4

SHEET NO. :